



BHS Quarterly

Volume VIII No. 2

Brant Historical Society 2001 ISSN 1201-4028

Summer, 2001

Dr. Vera Vanderlip: scholar and benefactor

By Angela Files

In the beginning of the year 2001, the Brant Historical Society was the recipient of \$42,000 from the estate of Dr. Vera Fredericka Vanderlip, a loyal member of the society. Dr. Vanderlip had passed away at the Grand River Hospital on May 3, 2000.

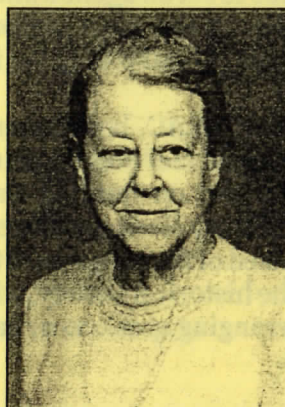
Dr. Vanderlip was the daughter of Frederick and Maude Vanderlip. She was a direct descendant of Loyalist William Vanderlip U.E., who served in Butler's Rangers during the American Revolution. Throughout her life Dr. Vanderlip served the United Empire Loyalist Association of Canada well by serving as the first chartered president of its newly-formed Grand River Branch for the 1973-1974 term, and by being elected as its president from 1986 to 1988.

The academic career of Dr. Vanderlip was very impressive. She taught Latin and Greek in North York secondary schools for 20 years and took a year's sabbatical to become a student again. At Yale University, she earned a second M.A. in classics and then specialized in pre-Christian mystery cults in the Near East and southeast Europe for doctoral studies.

She earned a Ph.D. in 1966 and jumped at the opportunity to teach at the university level. She finished her teaching career with 12 years at Wilfrid Laurier University, retiring in 1979.

In 1972, she published a book entitled *The Four Greek Hymns of Isidorus and the Cult of Isis*.

Dr. Vanderlip stated in a letter to me that her classes were largely in the Latin and Greek languages and literature, including several in Koine Greek (certain books of the New Testament).



Dr. Vera F. Vanderlip

At Dr. Vanderlip's suggestion, WLU added a course in Ancient Greek Art and Architecture, in which she used her extensive collection of personally taken, coloured slides of Greek architecture, the Greek mainland and islands, as well as Western Turkey. The

latter course led a number of students to travel to the sites they had seen in the slides. A few students pursued graduate studies related to this course.

Not only did Dr. Vanderlip encourage students to study ancient history, but she always encouraged me to continue writing local history! Her gift enables the history of her childhood city to be preserved for future generations.

As the Psalmist said, Dr. Vanderlip had a goodly heritage and knowledge, which she shared with many others!

Inside This Issue

President's Reflections	2
1875 Brantford Under the Microscope ...	3
The 1836 Paris "Covered" Toll Bridge	4
Glebe Land of Brantford Twp. (Part 3) ..	5
Off to the Races	6
B.H.S. Publications	6
New at the Gift Shop	6
Memberships	7
Happenings	8

Celebrating 93 years of preserving local history

President's Reflections

Summer is approaching and I am sure many of you, like me, are looking forward to some vacation over the next few months. As we head into the summer break there are a few matters I think members of the society should be aware of.

At the last board meeting there was discussion about the future of the Brant County Museum & Archives, given the state of our existing facility, our tenuous tenancy at the Market Square and the demise of BRAC. The board has directed me to establish a committee to set an agenda and prioritize the questions and decisions to be made leading to the expansion of the existing facility or the construction of a new one. This committee is to be made up of board members and society members. This is bound to be an interesting work and if you are interested in being involved, please let the museum office know.

In a similar vein, with the end of BRAC, board members have been meeting with board members from other organizations which have staff and fixed facilities to maintain. We have been discussing co-operation and presenting a united front to the City of Brantford on funding issues. These meetings have included representatives from Myrtleville, Glenhyrst, Canadian Military Heritage Museum, Kanata and the Cockshutt group. These are preliminary discussions and I will keep you advised of the progress of this initiative.

Lastly, one of the attributes of the historical society, which makes it vibrant, is the monthly meeting with a speaker. If anyone would like to help with arranging speakers or has any suggestions for speakers, please let me know.

John Wyatt

Brant Historical Society Board of Directors

President John Wyatt

Vice President Rev. Calvin Diegel

Secretary Margaret Glass

Treasurer Julie Gillis

Past President Robert Glass

Directors

John Bonfield, Angela Files, Dr. Hank Hedges, Ruth Lefler, David Partridge,
Robert Deboer, Mike Hand, David Judd, Gloria Neamtu, Anne Westaway

Brant County Museum & Archives

57 Charlotte Street, Brantford, Ontario
(519) 752-2483

Admission: Adults \$2.00 Seniors/Students \$1.50

Children \$1.25 Under 6 Free

BHS Members Free

Hours: Wednesday to Friday 10 a.m. to 4 p.m.

Saturday 1 to 4 p.m.

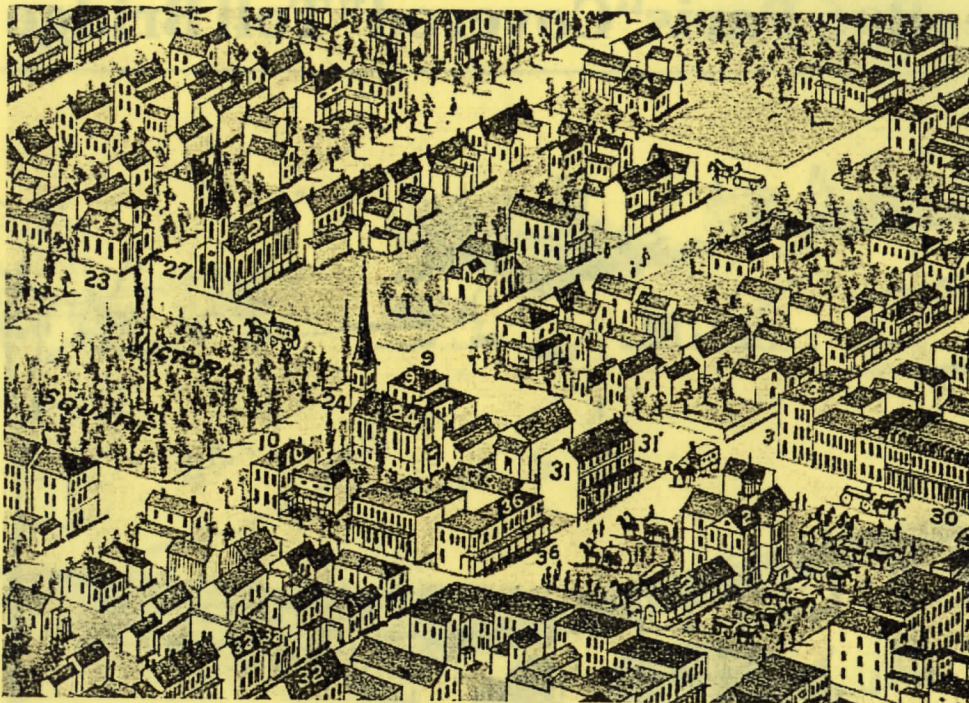
Web site:

<http://www.bfree.on.ca/comdir/musgal/bcma>

The Museum in the Square (A Satellite of the B.C.M. & A.)

Main Level, Market Square Mall
1 Market Street, Brantford, Ontario
(519) 752-8578

Admission by Voluntary Donation
Hours: Monday to Friday 10 a.m. to 5 p.m.
Closed Saturdays



Detail of downtown from 1875 map of Brantford available on the Internet showing Victoria Square, Zion church and Market Square.

1875 Brantford under the magnifying glass

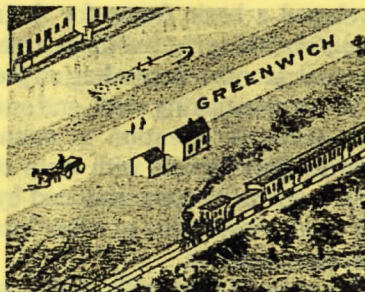
By David Judd

On the wall in the library at The Expositor hangs a fascinating map. It's entitled a "Bird's eye view of Brantford, province Ontario, Canada 1875."

I can't tell you how many times the map has caught my eye as I walked by. Spread before you, as if seen from a great height, is the city of Brantford as it looked more than 125 years ago.

This is no ordinary map. It shows not only what you would expect — city streets and the Grand River — but also buildings, bridges, parks, trains, horses and wagons, even people, in astonishing detail.

You can study it for hours, deciding which houses, stores and public buildings are still standing, which streets have changed names and which parts of the river have changed their course.



Greenwich Street

The map has been put to good use recently. The area around the Lorne Bridge is featured on the cover of the Brant Historical Society's recent publication "Signposts: Origins of Street and Road Names of Brant County and Brantford." The Expositor used the map last autumn to illustrate its special section on the local

government elections.

So I perked up at a recent Brant Historical Society meeting when one of the members in the audience mentioned that the map is on the Internet. Back home, our trusty iMac computer didn't take long to track it down.

It's at a site operated by American Memory. The address is: [http://memory.loc.gov/cgi-bin/map_item.pl?data=/home/www/data/gmd/gmd3/g3464/g3464b/pmo10690.sid&style=pmmmap&itemLink=r?ammem/gmd:@filreq\(@field\(NUMBER+@band\(g3464b+pmo10690\)\)+@field\(COLLID+pmmmap\)\)&title=Bird's+eye+view+of+Brantford,+province+Ontario,+Canada+1875.+](http://memory.loc.gov/cgi-bin/map_item.pl?data=/home/www/data/gmd/gmd3/g3464/g3464b/pmo10690.sid&style=pmmmap&itemLink=r?ammem/gmd:@filreq(@field(NUMBER+@band(g3464b+pmo10690))+@field(COLLID+pmmmap))&title=Bird's+eye+view+of+Brantford,+province+Ontario,+Canada+1875.+)

(Note there is no www in this address. If you want a shortcut, make a search for "Brantford bird's eye map." You'll find it in no time.)

It's well worth the effort to locate. Be sure to bookmark it on your browser because you will want to return to it again and again, especially if you have kids or grandkids who can use it for school projects.

You can print the entire map, or selected parts, on your home printer. But the best feature is the ability to zoom in on any detail just about as close as you want.

Choose a level of magnification then click on the section you want to look at more closely. The scenes come alive with detail. At the market, vendors and their enormously oversized wagons are lined up for business. On Greenwich St., a train steams by a horse and wagon

Continued on Page 4

The 1836 Paris “Covered” Toll Bridge



By Roger Sharpe

In the Summer 1999 issue I wrote an article about the early 1836 Paris Toll Bridge. Since that time a picture of the early bridge in 1842-1843 has come to light, thanks to Steve Hall of Paris, and I thought society members might be interested in seeing it. Perhaps the most interesting feature is that it is a “covered” toll bridge.

During my research for the initial article I did come across one reference calling it a covered bridge, but I chose to not include the reference because I could not find a second source to support the claim. From the picture it is clearly a covered bridge. The Paris picture is a winter scene with cows grazing

on the Flats in the foreground beside the meandering Grand River. Viewed from the east side of the river, you can see the east approach ramp to a bridge that is framed with a roof and sides. The central focus of the picture is the Anglican Church, built on the incline of the Grand River valley’s west side.

One more small glimpse of “The Prettiest town in Canada.”

Endnote

Wightman, Jean Anne, *Change In Historic Townscape, A Study of the Town of Paris, Ontario*, p. 22, 1985 (University of Guelph).

Brantford under the magnifying glass

Continued from Page 3

while a barge floats in the canal.

An accompanying article on the American Memory Web site gives a basic history of bird’s eye or panoramic views. They were popular in the Northern United States and Southern Canada from the end of the American Civil War in 1865 until the 1920s. About a half-dozen artists specialized in them, starting in the Chicago area where publishing companies had the modern equipment to print them. Brantford’s 1875 bird’s eye map was drawn by Herman Brosius for Chas. Shober & Co. props Chicago Lith. Co. The map featured on the Internet measures 53 centimetres by 62 centimetres and belongs to the U.S. Library of Congress.

I naively had thought the artist of the Brantford map, Herman Brosius, had taken a camera up in a balloon and worked from photographs to compile his bird’s eye map. Not true. The work was far more difficult than that.

For each city, Brosius and his contemporaries first

developed a basic frame for their maps, then walked the streets sketching the buildings, trees and other features. Each map took months, depending on the size of the city or town.

It was painstaking work, and one can guess the artists gave more accurate attention to main streets with interesting features than streets with rows of working men’s houses. Most maps were commissioned by chambers of commerce, real estate developers or other businesses wanting to boost their communities.

Maps were sold individually and were very popular. In addition to the 1875 map, another bird’s eye view of Brantford was done in 1893, a copy of which can be seen in the Bell Homestead. Simcoe was done in 1881 as were Tillsonburg and Norwich.

How ironic. The novelty of the bird’s eye view maps was seeing the city from high above, a scene that in the age before aircraft could only be imagined. Today, thanks to the Internet and its power to zoom in on details, we can put the 1875 map under the magnifying glass to reveal its wonders.

The Glebe Land of Brantford Twp. (Echo Place)

Negotiations of Glebe Property Along With Dates From *The Brantford Expositor*

1950 - The City of Brantford attempted to purchase a whole parcel of about 105 acres of Glebe land. The matter of sale was put up to vote among the people of Six Nations, but it was not approved because of the lack of sufficient eligible voters.

May 3, 1950 - Brantford Township rented 15 acres of Glebe property, where the military camp was situated, as a park and playground.

January, 1951 - Six Nations Council granted Ontario Hydro Electric Power Commission a parcel of land on the Glebe property for construction of a substation to convert Ontario from 25- to 60-cycle power.

February 8, 1952 - Talks about the sale of Glebe property were re-opened until June, 1953, and a deed was conveyed to the City of Brantford.

March 17, 1952 - Six Nations Council asked \$1,777 per acre, with a blanket price of \$160,000.

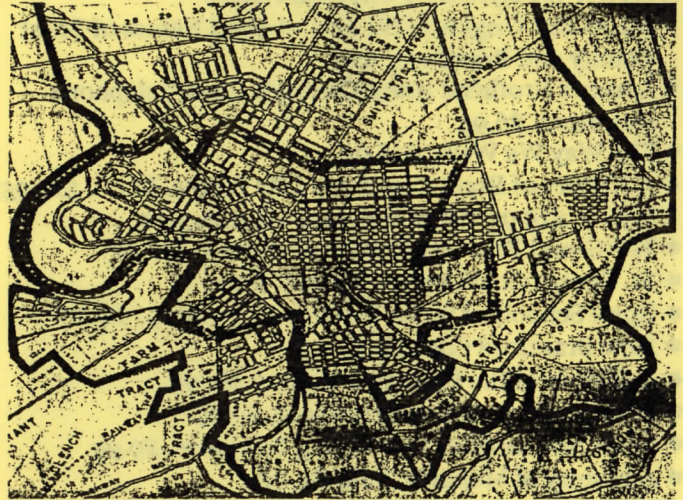
March 25, 1952 - Six Nations residents, in a plebiscite, offered to the City of Brantford 100 acres of Glebe property, which did not include the five acres of land on which the substation was located.

April 12, 1952 - Brantford City Council offered to allow native people to select the names of the park area and the new secondary school.

1953 - Six Nations chose the name Pauline Johnson to honour their poetess. The City received a deed (#40B) for 90 acres of the purchased land.

1954 - The 32-room Pauline Johnson Collegiate was built on 15 acres of Glebe property by Schultz Construction Company.

January, 1955 - Pauline Johnson Collegiate was opened.



Annexation: Present city (dotted line) will be enlarged to include whole area bounded by solid line.

Part 3 *Two Events Which Affected the Glebe Land in 1955*

By Angela Files

Two events which affected the Glebe land in 1955 were the annexation of a substantial portion of Brantford Township to the City of Brantford and the opening of Pauline Johnson Collegiate on Glebe land.

The Annexation of a Portion of Brantford Township to the City of Brantford

The application of the City of Brantford to annex a substantial part of the Township of Brantford was granted in full by the Ontario Municipal Board and became effective on January 1, 1955. The additional land of Brantford Township increased the city's area by 7,900 acres and increased the population to approximately 50,000 people.

The Negotiations For Glebe Land From the Six Nations by the City of Brantford

During the Second World War, the Glebe property was used as a military training camp for more than 35,000 men. At the termination of the war, the military buildings were moved to Six Nations land to be re-converted for schools, fair buildings and a dental clinic at Lady Willingdon Hospital in Ohsweken. A few of these buildings still exist but most of them have been replaced by modern structures.

As early as January 1930, Glebe property was offered to the City of Brantford by Six Nations Council. Near the end of the Second World War in 1945, native people asked for \$175,000 for a portion of property on Glebe land.

From the year 1950 on, talks pertaining to the purchase of the Glebe property from Six Nations continued. The chart at left deals with some of these major negotiations between Six Nations, Brantford Township Council and the City of Brantford.

B.H.S. Publications

B.H.S. Original Publications

- Signposts: Origins of Street and Road Names of Brant County and Brantford, \$20
- Lorimer Brothers: Brant County's Other Telephone Inventors, \$6.95
- The Way We Were, \$16.95
- A History of Brant County and Its People, Vol. 1, \$14.95; Vol. 2, \$15.95. Set of Volumes 1 & 2, \$22.50
- The Grand River Navigation Company, \$21.95
- St. George Continuation School, \$7.00
- Rural Schools of South Dumfries Township, \$8.00
- How Brantford Cooked, \$5.95
- A History of the Brantford Pottery, \$9.95
- Brantford Arts & Entertainment, \$9.95
- From Automobiles to Washing Machines, \$9.95
- A History of Mohawk Park, \$2.00
- Wild Mammals of Southwestern Ontario, \$8.95
- Tuscarora Township, \$5.95
- My War, \$5.00

B.H.S. Reprints

- Oakland Township, \$8.00
- Lewis Burwell's Diary of the Indian Surrender, \$8.00
- Grand River Tract Assessment Rolls, 1816, 1818-1822, \$5.95
- Grand River Tract Census (1824, 1827, 1829, 1832), \$5.95

- \$5.95
- Index to 1851 Census, \$5.95
- Brant County Place Names and List of Professionals and Trades, 1858, \$5.95
- Directory of the Townships of Brant, 1880, \$10.00
- City of Brantford Municipal Directory, 1880, \$10.00
- Irwin's Directory, 1883, \$10.00
- City of Brantford Municipal Directory, 1883-1886, \$8.00
- City of Brantford Directory, 1899-1900, \$16.95
- Brantford City Directory, 1910, \$16.50

Please contact the Brant County Museum & Archives to order any of these books.

Telephone: (519) 752-2483

E-mail: bcma@bfree.on.ca

Museum Web Site:

www.bfree.on.ca/comdir/musgal/bcma

Brant County/Ontario GenWeb Project Web Site (listing further information): www.rootsweb.com/~onbrant

New at the Gift Shop

By Air, Land & Sea

Ruth E. Vanderlip, \$24.95

An entertaining account of a year's trip around the world.

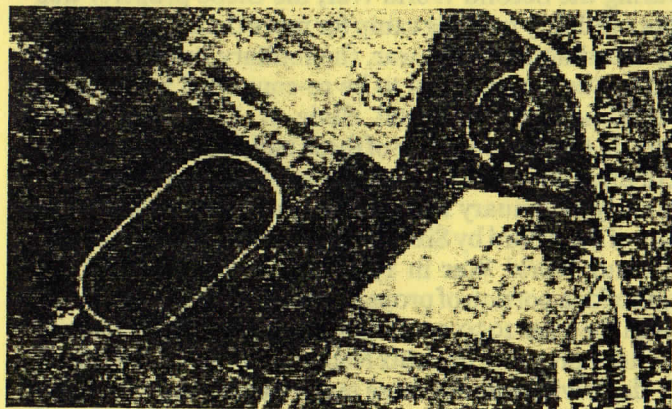
Memories of Paris: A Sentimental Journey Back to the Prettiest Little Town In Ontario

Don Stewart, Founder of Pride of Paris Fabrics, \$14.95

Off to the Races

By Ruth Lefler

The large oval found in the Henderson Survey, which was featured in the Spring 2001 issue of the newsletter, aerial view is no longer a mystery. It is my understanding that this farm and the dirt training track were owned by Joseph Blake. He kept and trained horses here. He was also a market gardener who delivered produce to many local stores.



Copyright Information

The copyright on all articles and submissions contained in the "B.H.S. Quarterly" is vested with the authors. Permission to use any article or submission in whole or in part must be obtained from the authors. Authors can be contacted through:

The Brant Historical Society
57 Charlotte Street
Brantford, Ontario N3T 2W6
Phone: (519) 752-2483

ACKNOWLEDGEMENTS

*The Brant Historical Society
gratefully acknowledges support from:*

The County of Brant

The City of Brantford

The Ontario Ministry of Citizenship, Culture and Recreation

Corporate Sponsors

The generous support of our Corporate Members allows us to continue developing quality exhibitions and community programs.

Brant Flour Mills Ltd.
Cascades Dominion Inc.
EXTEND Communications Inc.
Hooton's Security Systems
S. C. Johnson and Son, Limited
Raymond Industrial Equipment Limited
Sonoco Limited

Welcome to New Members

Norman and Genevieve Baulcomb
Mrs. Laurene Campbell
Mrs. Helen Doctor
Mrs. Mary Rigg

Renewing Members

Bob and Tanis Anderson
Dr. Robert W. and Ms. Sondra A. Archibald
Diane P. Baltaz
Bill and Donna Bowman
Donald J. Boyle
Fred and Wanda Bradley
Brian and Patricia Burgon
Anne and Malcolm Byard
Peter Byerlay

Eleanor Chapin
Thomas and Dorothy Deville
Edwin J. Eason
Jacqueline Evans
Jean and Allan Farquharson
Rev. Nora E. Fueten
Robert and Margaret Glass
Lucy Hagopian
Audrey Haight
Janice Harris
Bruce E. Hill
Hilda M. Hill
John and Christine Johnson
David and Colleen Judd
Roby M. Keene
Margaret Lang
Morley and Ruth Lefler
Frank and Greta Matthews
Dr. Wm. Harold Minshall
Stanley Mulcahy
Gloria Neamtu
Ed and Cathy Pancoe
Bruce G. Pearce
James and Janet Percival
Kathy and Kenneth Richards
Robert W. Spearin
Clara E. V. Terryberry
Joyce Rose Thomas
Ben Van Veldhuisen
Ruth Walker
John Waterous
Boleslaw and Kazimiera Wilbik
Mabel Wyatt
D. Alan and Pat Young

A Brant Historical Society Membership Offers...

- free admission to the Brant County Museum & Archives, Bell Homestead and Myrtleville House Museum (excluding special events)
- exemption from personal research fees in our archives
- bulletins about upcoming museum activities
- subscription to the "B.H.S. Quarterly"
- discounts on Heritage Bus Tours, Children's Museum Club and other programs
- 10% discount on Gift Shop purchases over \$10

Endowment Fund

The Brant Historical Endowment fund is one of the ways in which we can ensure a viable future for the Society and the Museum. We thank the following donors for their generous recent contributions.

F. Eleanor Chapin

In Memory of George R. Houlding Q.C.
William Fuller

In Memory of Neil Ferguson
Marg and Cy Walter

In Memory of Louis Robert Campbell
Members of the Brant Historical Society

MEMBERSHIPS

Happenings

Brant County Museum & Archives

Exhibits

"To The Nines: A Collection of Hats, Shoes, Purses and More", June 25 to October 5. No fashionable Brantfordian would ever dream of stepping out without these accessories!

Summer Camps

"Survivor!", July 9 to 13. Join the pack at the Brant County Museum for a five-day camp filled with hands-on activities, games and challenges, and the opportunity of learning more about real survivors and pioneers, and the skills they used to stay alive.

"B Is For Brantford", July 18. This one-day summer program aims to enlighten, educate and help that "new kid in town" learn more about Brantford and Canadian culture.

"C Is For Creativity", August 1. This one-day summer program will give campers the opportunity to explore and develop their creative and imaginative talents through reading, writing and designing.

Curator's Corner

I would like to take this opportunity to introduce the new staff members at the museum. Shanna Dunlop is our new Assistant Curator. Shanna is currently completing her Ph.D. in Anthropology at McMaster University. Debbie Olsen is our new Program Officer. Debbie comes from South Africa where she taught for 15 years. She and her family moved to Brantford two years ago. I know that you will join me in welcoming them. Also special thanks to Marilyn McDonald and Cindy MacDonald for their continued hard work as our Administrative Assistants. We have received funding for two summer students this year: a Museum Assistant and a Program Assistant.

Volunteer Appreciation Night is quickly approaching and I'd like to thank all of you who have volunteered over the past year. Your time and work is greatly appreciated. Without you we wouldn't be here. But we always need more volunteers. We can match any level of skill, interest and time commitment with our special projects. If you are interested, please contact me at the museum at 752-2483. A special thanks to Irene Rae for her donation of Forget-Me-Nots, the Garden Club for some beautiful annuals and Cindy MacDonald, Margaret and Bob Glass and Heather Macdonald for all of their time spent pulling weeds and cleaning out the gardens.

I hope everyone has a wonderful summer and please come in for a visit and a cool glass of lemonade.

Stacey McKellar

"Mummies Alive!", August 20-24. Travel with us to the Land of the Pharaohs, and learn more about this fascinating civilization. Have fun with hieroglyphics; discover the ancient art of embalming; design, construct, make and bake, at this five-day camp.

"M Is For Museum", August 29. This one-day summer program offers campers the opportunity to handle artifacts from different time periods, and to learn more about how people dressed, worked, lived and socialized.

Camps are suitable for children aged 6 to 12. Drop off between 8:30 and 9:00 a.m. Pick up between 3:30 and 4:00 p.m. Children must bring their own lunches. Full-day program \$20.00. Half-day program \$10.00. 10% discount given to historical society members, families that register two or more children, or children who register for a full week of camp. Please contact the museum for more details and booking information at 752-2483.

Summer Hours

Extended summer hours for July and August are as follows:

57 Charlotte Street	Sunday 1 to 4
Museum in the Square	Saturday 10 to 5

Both sites will be closed July 2, August 6 and September 3.



Brant Historical Society

Brantford Film Group

Look for the fall schedule of the Brantford Film Group in late August. Please contact Margaret Glass at 756-3705 or the museum at 752-2483 with any ideas or questions. The new schedule will be posted, as soon as it is available, on our Web site: www.bfree.on.ca/comdir/musgal/bcma

Volunteer Appreciation Night

Our annual Volunteer Appreciation Night will be held at Kanata Village on Wednesday, June 20, at 6:00 p.m. A picnic supper will be provided for the volunteers. The public is invited to the regular meeting at Kanata at 7:00 p.m. for a firelight tour of the village, native dancers and a journey through the Creation Maze.

Monthly General Meeting

Our next General Meeting will be Wednesday, Sept. 19, at 8 p.m. If you have any ideas about speakers for the fall meetings, contact John Wyatt or the museum at 752-2483.

Get Well Wishes

Glenn Kilmer, Robert Deboer

Please remember to bring your Zehrs tapes to the museum. Every little bit counts!